

医用超声波花边机

Medical Ultrasonic Lace Sewing Machine

越来越多的医疗产品使用塑料作为原材料，并借助超声波进行焊接。特别是在要求极为严格的高质量医疗技术应用中，超声波表现出了极大优势，是一种快速、可重复的焊接技术。在超声波焊接塑料制品，包装材料，及无纺材料应用技术领域，超声波焊接显示出了其强大的能力。

More and more medical products use plastic as a raw material and are welded with the help of ultrasonic waves. Especially in high-quality medical technology applications with extremely stringent requirements, ultrasonic offers great advantages as a fast, repeatable welding technology. In the field of ultrasonic welding of plastic products, packaging materials, and non-woven materials application technology, ultrasonic welding has shown its strong ability.

产品用途 Product application:

主要运用于医疗领域各种无纺布袋，一次性医用无菌护理垫焊接，一次性手术衣，手术帽，医用眼罩，雨衣，PVE手提袋，雨伞，食品包装袋，帐篷，鞋帽制品，尼龙带封口、集尘袋等。

Mainly used in the medical field of various non-woven bags, disposable medical sterile care pad welding, disposable surgical gowns, surgical caps, medical eye masks, raincoats, PVE handbags, umbrellas, food packaging bags, tents, shoes and hat products, nylon band sealing, dust bags, etc.

主要技术参数 Main technical parameter

产品型号 Type	工作频率 HZ	功率 Power	粘合宽度 Width	花轮直径 Roller diameter	最大速度 Max. Speed	工作空间 Work space	机体尺寸 Ultrasonic size	整机尺寸 Machine size
X20	35KHz	1000W	15mm	30mm	40m/min	680*130mm	500*125*265mm	1210*600*1100mm
			54mm	45mm				
X30	20KHz	2600W	77mm	50 mm	25 m/min			
			110mm					

备注：以上规格参数如有变更，恕不另行通知。Note:The specifications are subject to change without prior notice.



可穿戴外骨骼机器人

Wearable Exoskeleton Robot



柔性随意坐外骨骼解决方案 Flexible sitting exoskeleton solution

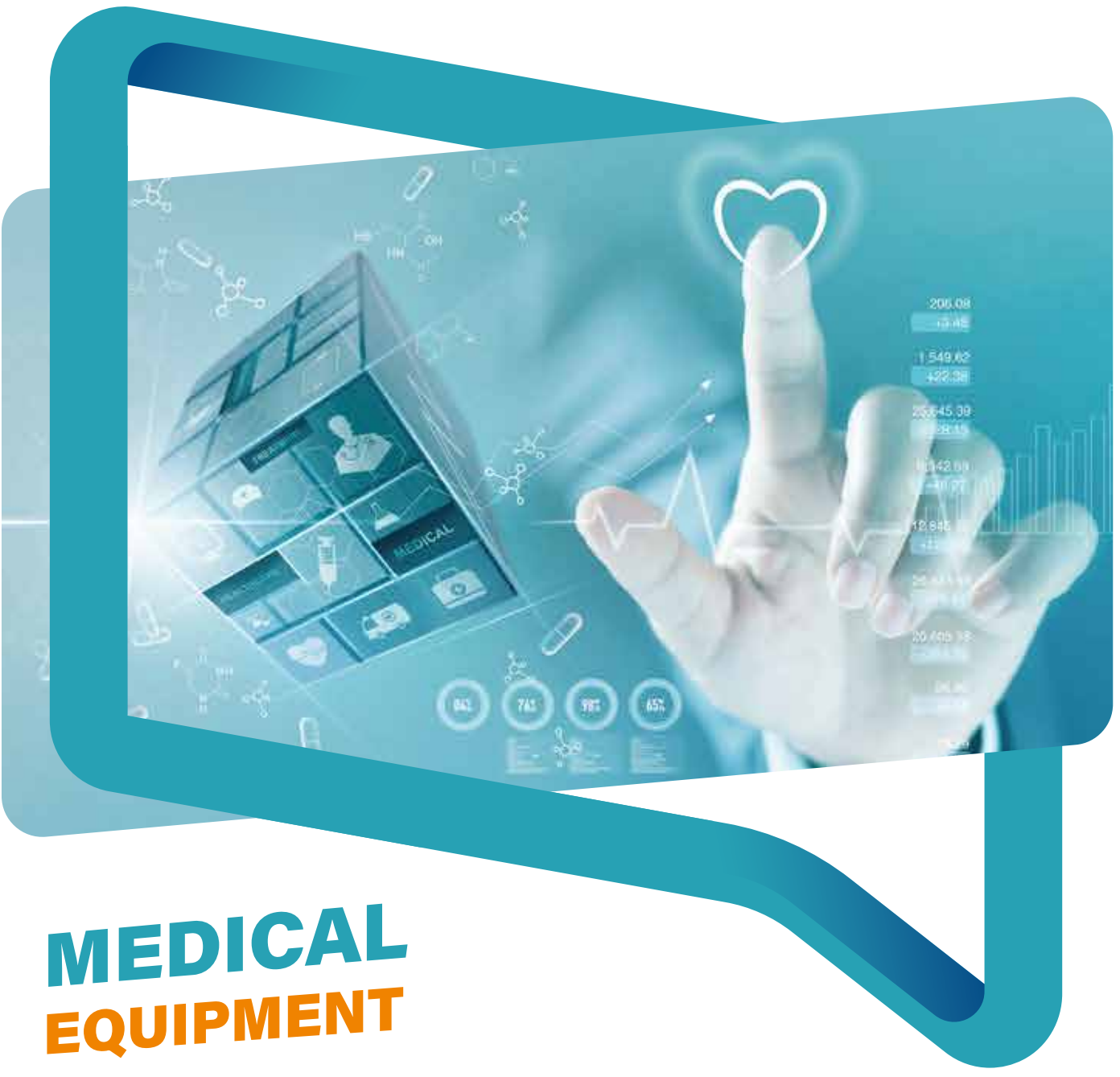
材质：碳纤维、钛合金、工程塑料、航空铝材、透气柔性包裹材料等。

使用范围：减缓工人疲劳的灵巧装备，其采用轻量化材料，具备传统座椅没有的轻便性。借助外骨骼座椅，工人在紧凑的工厂空间中也能随时坐下，保存体力，提高工作效率。

动态平衡原理。即下肢外骨骼的两个支撑和人体两脚组成支撑四边形，当人体重心落在支撑四边形上时，人体可以保持动态平衡。

Material: carbon fiber, titanium alloy, engineering plastics, aviation aluminum, breathable flexible wrapping materials, etc.

Use range: The smart equipment to reduce the fatigue of workers, using lightweight materials, has the lightness that traditional seats do not have. With exoskeleton seats, workers in compact factories. You can sit down at any time in the space to save energy and improve work efficiency.



医用设备



Email: salgg@jwell.cn

WhatsApp/Wechat/Tel: +86 178 2010 6288

版本号Edition No.: 2022.06

金纬机械
JWELL MACHINERY

医美仪器
 Medical Cosmetology Instrument

激光生发仪 Laser hair growth device

激光生发仪通过增加皮下组织的三磷酸腺苷（ATP）的活动，促进组织的新陈代谢帮助提升血液循环，令氧气及营养送往毛囊，防止脱发；有效刺激毛囊，调节油脂分泌加速毛发生长，并加强头发本身的强度、密度以及头发的弹性；激光生发仪无痛，无创伤，无耗材，使用简单高效。

采用德国hydrosun发光器

The laser hair growth device increases the activity of adenosine triphosphate (ATP) in the subcutaneous tissue, promotes the metabolism of the tissue, helps improve blood circulation, sends oxygen and nutrients to the hair follicle, and prevents hair loss; effectively stimulates the hair follicle, regulates oil secretion, accelerates hair growth, and strengthens the hair itself. The strength, density and elasticity of the hair; the laser hair growth device is painless, non-invasive, no consumables, simple and efficient to use.

Using German hydrosun illuminator

激光治疗仪 Laser therapy device

特殊波长红外红光对人体病患部位进行物理照射，能促进毛细血管扩张、改善局部血液循环、缓解肌肉痉挛、镇痛及促进组织再生等生理和治疗作用。

采用德国hydrosun发光器，触摸屏控制，带安全脚踏开关。

The physical irradiation of special wavelength infrared red light on the patient's body can promote telangiectasia, improve local blood circulation, relieve muscle spasm, relieve pain and promote tissue regeneration and other physiological and therapeutic effects.

Adopt German hydrosun illuminator, touch screen control, with safety foot switch.



医用固定支架
 Medical Fixed Support



短臂 Short Arm

短臂用于手腕、手和手指受伤。其纤薄轻巧的特点有助于患者进行日常生活活动。

Short Arm is used on wrist, hand and finger injuries. Its slim and light features help patients with performing daily life activities.



长臂 Long Arm

长臂用于手腕、肘部和手臂受伤。2件由夹子连接以形成铸件。它提供了足够的固定力来固定骨折。

Long Arm is used on wrist, elbow and arm injuries. 2 pieces are adjoined by clamps to form a cast. It provides sufficient fixing power to immobilize the fracture.



短腿 Short Leg

用于脚踝、足部和脚趾受伤。其独特的鞋底结构提供了更多的强度和舒适度。

Short Leg is used on ankle, foot and toe injuries. Its unique sole structure offers more strength and comfort.

- 一流的固定和亲肤材料
- Superb fixation and skin-friendly material
- 快速简便的安装
- Quick and easy fitting
- 整个治疗期间的高质量生活
- High quality of life throughout treatment period

优点 Benefits:

带石膏的淋浴间：允许日常洗涤和带石膏的淋浴。水可以很容易用毛巾和吹风机擦干。

无异味无痒：汗水很快蒸发到防止瘙痒和异味。

皮肤监测：医生和患者可以目视检查透过窗户看皮肤状况穿着石膏的时候。

反复磨损：可以重复打开并在需要时重新佩戴。

易于拆卸：可以轻松安全无需使用电锯即可拆除。

舒适卫生：舒适卫生。

Showers with cast on: allows daily washing and showers with cast on. Water can be easily dried off with a towel and a hair dryer.

Odor and Itch free: perspiration is quickly evaporated to prevent itchiness and unwanted odor.

Skin Monitoring: doctors and patients can visually check the condition of the skin through windows while wearing the cast.

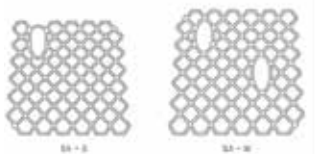
Repeated wear: can be repeatedly opened and be reworn when needed.

Easy removal: can be easily and safely removed without using electric saws.

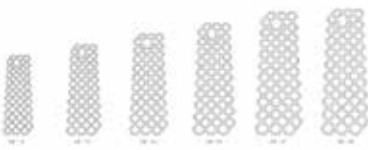
Comfortable and Hygienic: comfortable and hygienic.

合适的尺寸必须是选择患者的肢体。
 The appropriate size must be selected for the patient's limb.

Spec	Size (WxL, mm)
CM-03	130 x 362
CM-04	142 x 391
CM-05	167 x 435
CM-06	183 x 479
CM-07	204 x 527
CM-08	228 x 582



Spec	Size (WxL, mm)
SA-S	248 x 236
SA-M	300 x 261



医疗垃圾处理设备
 Medical Waste Management Equipment

使用悬浮容器和旋转研磨刀片来研磨所有类型的废物，包括金属物体。使用微波对生物危险废物进行消毒并转化为惰性城市垃圾，使其体积减少80%以上，重量减少25%。在确保操作员安全的同时，降低了对环境的影响和运营成本。由于采用微波技术，不需要蒸汽发生器，因此不存在过压风险，也不会产生液体流出物。其超紧凑的尺寸意味着其安装只需要10平方米的空间。易于使用和维护，其运营成本是市场上最低的。它允许小型机构（例如实验室、小型诊所和医院）每小时（20公斤/小时*）对多达 200 升生物医学废物进行安全的现场处理。

优点:

全面去污：生物危险废物用微波消毒（将其加热到 110°C 20 分钟），并允许高达 8log10 的微生物灭活。

安全处理：微波灭菌技术不需要加压，这消除了任何爆炸风险。此外，微波被限制在容器内部，以避免操作员暴露在辐射中。

无液体流出物：处理过程不产生任何蒸汽或液体流出物，这意味着不消耗水，也不需要在其安装中包括污水排放系统。

没有隔离：适用于所有类型的生物医学废物（针头、玻璃、固体、液体等）

易于维护：该设备采用强大的技术制造。用于诊断的 IP 连接。带有警报的预防性维护计划/日历。

重量减少 25%，体积减少 80%:生物医学废物被转化为类似于城市废物的惰性废物。干碎的废物也可以用作二次燃料。

Its innovative concept uses a suspended vessel and rotating grinder blades to grind down all types of waste, including metallic objects. Biohazardous waste is sterilised using microwaves and converted into inert municipal waste, reducing its volume by more than 80% and its weight by 25%. Its environmental impact and operating costs are reduced while ensuring the safety of the operator. As it uses microwave technology, the Sterilwave does not need a steam generator, so there is no risk from excess pressure and no liquid effluent is produced. Its ultra-compact size means its installation only requires 10m² of space. The Sterilwave 100 is the solution for easy use and maintenance, with operating costs which are amongst the lowest on the market. It allows small institutions (e.g. laboratories, small clinics and hospitals) to carry out safe, on-site treatment of up to 200L of biomedical waste per hour (20kg/hr*).

Benefits

Full decontamination: Biohazardous waste is sterilised with microwaves (heat it up to 110°C for 20 minutes) and allows microbial inactivation of up to 8log10.

Safe processing: Microwave sterilisation technology does not require pressurisation, and this removes any risk of explosion. Moreover, the microwaves are confined to the inside of the vessel to avoid operator exposure to radiation.

No liquid effluent: The treatment process does not produce any steam or liquid effluent, which means no consumption of water and no need to include an effluent drainage system in its installation.

No segregation: The Sterilwave is suitable for all types of biomedical waste (needles, glass, solids, liquids, etc.)

Easy maintenance: The equipment is built using robust technology. IP connection for diagnostics. Preventive maintenance plan/calendar with alarm.

Reduces weight by 25% and volume by 80%: Biomedical waste is converted to inert waste similar to municipal waste. The dry ground-up waste can also be used as secondary fuel.

